

Mandatory Disclosure

1. AICTE File No. : F.No. Northern/1-3324247616/2017/EOA
Date & Period of last approval : Apr 10, 2017, Period 2017-18

2. Name of the Institution : **TULA'S INSTITUTE**
Address of the Institution : Mehre Ka Gaon, Dhoolkot, Post Office- Selaqui,
City & Pin Code : Dehradun - 248011
State/ UT : Uttarakhand.
Phone number with STD code : 0135- 2699300,
FAX number with STD code : 0135 – 2699305
Office hours at the Institution : 9:30 am to 5:00 pm
Academic hours at the Institution : 9:45 am to 4:15 pm
Email : info@tulas.edu.in
Website : www.tulas.edu.in
Nearest Railway Station (dist in Km) : Dehradun (16 km)
Nearest Airport (dist in Km) : Jolly Grant (43 km)

3. Type of Institution : Private-Self Financed
Category (1) of the Institution : Non Minority
Category (2) of the Institution : Co-Ed

4. Name of the organization running the Institution : Rishabh Educational Trust
Type of the organization : Trust
Address of the organization : Tula's Palace, Shopping Complex, Haridwar Road,
Dehradun (Uttarakhand).
Registered with : Sub-Registrar, Vikasnagar, Dehradun.
Registration date : 24/09/2004
Website of the organization : www.tulas.edu.in

5. Name of the affiliating University : Uttarakhand Technical University
Address : Government Girls Polytechnic
Post Office, Chandanwadi, Prem Nagar
Sudhowala, Dehradun (Uttarakhand)
Pin - 248007.
Website : www.uktech.ac.in
Latest affiliation period : 2017-18

6. **Name of Director** : Dr. S.Suresh Kumar
 Exact Designation : Director
 Phone number with STD code : 0135- 2699300,
 FAX number with STD code : 0135 – 2699305
 Email : director@tulas.edu.in
 Highest Degree : M.Tech,Ph. D
 Specialization & Research areas : Computer Science &Engg.

7. **Governing Board Members:-**

Chairman	Mr. Sunil Kumar Jain
Secretary	Mrs. Sangeeta Jain,
Member	Ms. Silky Jain

Frequency of meetings & date of last meeting : Quarterly, last meeting held on (14-01-2016)

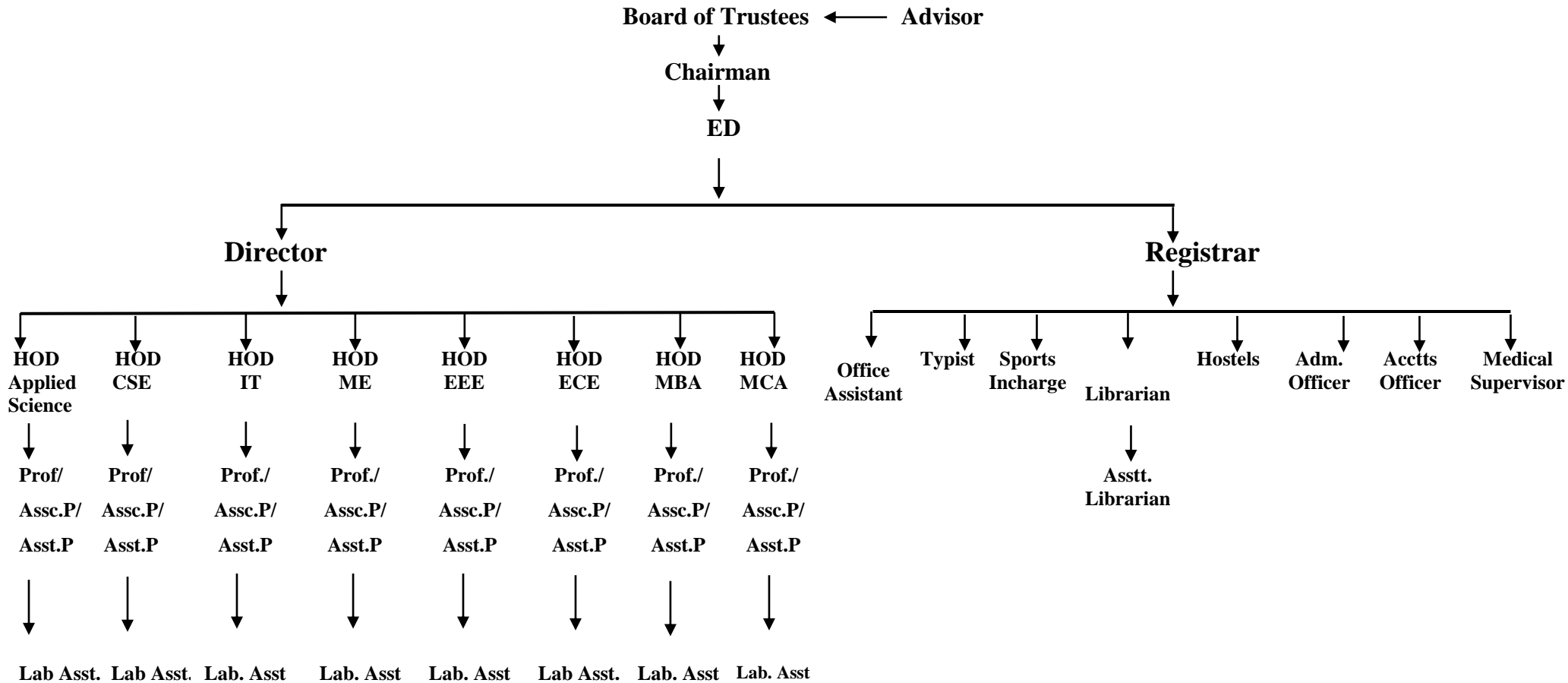
8. **Academic Advisory Body:-**

i. Chairman	C.A. (Dr.) G.G.Garg B. Com., FCA, Ph.D
ii. Member	Mr. Paras Garg B Tech (IIT Kanpur), Group Manager IO Solution TR& D, ST Micro-electronics Pvt Ltd
iii. Member	Mr. Sanjay Jain (Industrialist)
iv. Member	Mr. Anuj Garg B Tech, PGDBA, Sr. Technical Analyst, Oracle India Pvt. Ltd.
v. Nominee of AICTE	To be appointed by AICTE
vi. Nominee of Council	Industrialist / Technologist / Educationist to be appointed by AICTE
vii. Nominee of UTU	To be appointed by the University
viii. Nominee of Uttarakhand Govt.	Director Technical Education (Ex – Officio)
ix. Nominee of Uttarakhand Govt.	Industrialist / Technologist / Educationist
x. Member Secretary	Dr. S Suresh Kumar(Director)

Frequency of meetings & date of last meeting : Yearly, last meeting held on (14-1-2017)

9. Organization Chart :-

Organizational Chart and Process



10. Student feedback mechanism on : Through well-structured online & offline Feedback Forms/
Suggestion Box Institutional Governance/faculty performance

11. Grievance redressal mechanism for faculty, staff and students : -

Class Coordinators, HOD's, Registrar and the Director hold frequent meetings with CR's. Also the grievances received through the suggestion box etc. are quickly given due attention and corrective action is immediately taken.

12.

a. Name of Department : Mechanical Engineering (ME)

Course : B.Tech.
Level : UG
1st Year of approval by the Council : 2006
Year wise Sanctioned : mentioned below
Year wise Actual Admissions : mentioned below

U.G. Programme – B.Tech		
Year		ME
2006-07	Sanctioned Intake	60
	Students Admitted	53
2007-08	Sanctioned Intake	60
	Students Admitted	60
2008-09	Sanctioned Intake	60
	Students Admitted	60
2009-10	Sanctioned Intake	120
	Students Admitted	120
2010-11	Sanctioned Intake	120
	Students Admitted	118
2011-12	Sanction Intake	120
	Students Admitted	106
2012-13	Sanction Intake	120
	Students Admitted	105
2013-14	Sanction Intake	120
	Students Admitted	83
2014-15	Sanction Intake	120
	Students Admitted	64
2015-16	Sanction Intake	120
	Students Admitted	53
2016-17	Sanction Intake	120
	Students Admitted	45

Cut off marks – General quota : UTU Counseling/ AIEEE
Year 2016-17 : Name- Sumit Kumar (Score State Rank 1949)
% Students passed with Distinction : 04
% Students passed with First Class : 65
Students Placed :34
Average Pay package, Rs. /Year : 2.4 Lac /anm
Students opted for Higher Studies : N.A.
Accreditation Status of course : Not eligible yet
Doctoral Courses : No
Foreign Collaborations, if any : NIL
Professional Society Memberships : ISHRAE Student Chapter, Dehradun
Professional activities : Conducted different types of workshop

Consultancy activities : NIL
 Grants fetched : N.A.
 Departmental Achievements : N.A.
 Distinguished Alumni : Shradul Tiwari placed in Sterlite Technologies

b. Name of Department : Computer Science & Engineering (CSE)

Course : B.Tech.
 Level : UG
 1st Year of approval by the Council : 2006
 Year wise Sanctioned : mentioned below
 Year wise Actual Admissions : mentioned below

U.G. Programme – B.Tech		
Year		CSE
2006-07	Sanctioned Intake	60
	Students Admitted	50
2007-08	Sanctioned Intake	60
	Students Admitted	58
2008-09	Sanctioned Intake	60
	Students Admitted	60
2009-10	Sanctioned Intake	120
	Students Admitted	102
2010-11	Sanctioned Intake	120
	Students Admitted	66
2011-12	Sanction Intake	120
	Student Admitted	57
2012-13	Sanction Intake	120
	Student Admitted	60
2013-14	Sanction Intake	120
	Student Admitted	75
2014-15	Sanction Intake	120
	Student Admitted	80
2015-16	Sanction Intake	120
	Student Admitted	87
2016-17	Sanction Intake	120
	Student Admitted	119

Cut off marks – General quota : UTU Counseling/ AIEEE
 Year 2015-16 : Name- Neha Negi (Score State Rank 4252)
 % Students passed with Distinction : 04
 % Students passed with First Class : 62
 Students Placed : 48
 Average Pay package, Rs. /Year : 2.4 Lac/anm
 Students opted for Higher Studies : N.A.

Accreditation Status of course	: N.A
Doctoral Courses	: No
Foreign Collaborations, if any	: NIL
Professional Society Memberships	: NIL
Professional activities	: Conducted different types of workshop
Consultancy activities	: NIL
Grants fetched	: N.A.
Departmental Achievements	: N.A
Distinguished Alumni	: N.A.

c. Name of Department : Information Technology (IT)

Course	: B.Tech.
Level	: UG
1 st Year of approval by the Council	: 2007
Year wise Sanctioned	: mentioned below
Year wise Actual Admissions	: mentioned below

U.G. Programme - B.Tech		
Year		IT
2007-08	Sanctioned Intake	60
	Students Admitted	57
2008-09	Sanctioned Intake	60
	Students Admitted	60
2009-10	Sanctioned Intake	60
	Students Admitted	37
2010-11	Sanctioned Intake	60
	Students Admitted	12
2011-12	Sanction Intake	60
	Student Admitted	00
2012-13	Sanction Intake	60
	Student Admitted	00
2013-14	Sanction Intake	60
	Student Admitted	00
2014-15	Sanction Intake	60
	Student Admitted	00

Cut off marks – General quota	: UTU Counseling/ AIEEE
Year 2015-16	: Nil
% Students passed with Distinction	: 0
% Students passed with First Class	: 00
Students Placed	: 0
Average Pay package, Rs. /Year	: N.A

Students opted for Higher Studies : N.A.
 Accreditation Status of course : N.A.
 Doctoral Courses : No
 Foreign Collaborations, if any : NIL
 Professional Society Memberships : NIL
 Professional activities : NIL
 Consultancy activities : NIL
 Grants fetched : N.A.
 Departmental Achievements : N.A.
 Distinguished Alumni : N.A.

d. Name of Department : Electrical & Electronics Engineering (EEE)

Course : B.Tech.
 Level : UG
 1st Year of approval by the Council : 2006
 Year wise Sanctioned : mentioned below
 Year wise Actual Admissions : mentioned below

U.G. Programme - B.Tech		
Year		EEE
2006-07	Sanctioned Intake	60
	Students Admitted	50
2007-08	Sanctioned Intake	60
	Students Admitted	56
2008-09	Sanctioned Intake	60
	Students Admitted	60
2009-10	Sanctioned Intake	60
	Students Admitted	60
2010-11	Sanctioned Intake	60
	Students Admitted	48
2011-12	Sanction Intake	60
	Student Admitted	29
2012-13	Sanction Intake	60
	Student Admitted	25
2013-14	Sanction Intake	60
	Student Admitted	28
2014-15	Sanction Intake	60
	Students Admitted	17
2015-16	Sanction Intake	60
	Students Admitted	10
2016-17	Sanction Intake	60
	Students Admitted	13

Cut off marks – General quota	: UTU Counseling/ AIEEE
Year 2015-16	: Name- Nitin Bhardwaj (Score State Rank 4488)
% Students passed with Distinction	: 2
% Students passed with First Class	: 52
Students Placed	: 22
Average Pay package, Rs. /Year	: 2.4 Lac/anm
Students opted for Higher Studies	: N.A.
Accreditation Status of course	: N.A
Doctoral Courses	: No
Foreign Collaborations, if any	: NIL
Professional Society Memberships	: N.A.
(Director is member/fellow of Societies listed here)	: N.A.
Professional activities	: NIL
Consultancy activities	: NIL
Grants fetched	: N.A.
Departmental Achievements	: N.A
Distinguished Alumni	: N.A.

e. Name of Department	: Electronics & Communication Engineering (ECE)
Course	: B. Tech.
Level	: UG
1 st Year of approval by the Council	: 2006
Year wise Sanctioned	: mentioned below
Year wise Actual Admissions	: mentioned below

U.G. Programme - B.Tech		
Year		ECE
2006-07	Sanctioned Intake	60
	Students Admitted	49
2007-08	Sanctioned Intake	60
	Students Admitted	60
2008-09	Sanctioned Intake	60
	Students Admitted	60
2009-10	Sanctioned Intake	60
	Students Admitted	60
2010-11	Sanctioned Intake	60
	Students Admitted	49
2011-12	Sanction Intake	120
	Student Admitted	45
2012-13	Sanction Intake	120
	Student Admitted	32

2013-14	Sanction Intake	120
	Student Admitted	23
2014-15	Sanction Intake	120
	Students Admitted	12
2015-16	Sanction Intake	120
	Students Admitted	13
2016-17	Sanction Intake	60
	Students Admitted	23

Cut off marks – General quota	: UTU Counseling/ AIEEE
Year 2015-16	: Name- Avantika Juyal (Score State Rank 7844)
% Students passed with Distinction	: 2
% Students passed with First Class	: 55
Students Placed	: 28
Average Pay package, Rs. /Year	: 2.4 Lac/anm
Students opted for Higher Studies	: N.A.
Accreditation Status of course	: N.A
Doctoral Courses	: No
Foreign Collaborations, if any	: NIL
Professional Society Memberships	: Mr. Atul Sharma is LMISIO
Professional activities	: NIL
Consultancy activities	: NIL
Grants fetched	: N.A.
Departmental Achievements	: N.A.
Distinguished Alumni	: N.A.

f. Name of Department	: Civil Engineering
Course	: B. Tech.
Level	: UG
1 st Year of approval by the Council	: 2011
Year wise Sanctioned	: mentioned below
Year wise Actual Admissions	: mentioned below

U.G. Programme - B.Tech		
Year		Civil
2011-12	Sanction Intake	60
	Student Admitted	60
2012-13	Sanction Intake	120
	Student Admitted	95
2013-14	Sanction Intake	120
	Student Admitted	73
2014-15	Sanction Intake	120
	Students Admitted	90

2015-16	Sanction Intake	120
	Students Admitted	73
2016-17	Sanction Intake	120
	Students Admitted	72

Cut off marks – General quota	: UTU Counseling/ AIEEE
Year 2015-16	: Name- Vinayak Sharma (Score State Rank 5463)
% Students passed with Distinction	: 04
% Students passed with First Class	: 44
Students Placed	:32
Average Pay package, Rs. /Year	: 2.4LPA
Students opted for Higher Studies	: 14.
Accreditation Status of course	: Not eligible yet
Doctoral Courses	: No
Foreign Collaborations, if any	: NIL
Professional Society Memberships	: NIL
Professional activities	: Industrial Visit to Survey of India
Consultancy activities	: NIL
Grants fetched	: N.A.
Departmental Achievements	: N.A.
Distinguished Alumni	: N.A.

g. Name of Department	: MBA
Course	: MBA
Level	: PG
1 st Year of approval by the Council	: 2007
Year wise Sanctioned	: mentioned below
Year wise Actual Admissions	: mentioned below

P.G. Programmes		
Year		MBA
2007-08	Sanctioned Intake	60
	Students Admitted	60
2008-09	Sanctioned Intake	60
	Students Admitted	60
2009-10	Sanctioned Intake	60
	Students Admitted	60
2010-11	Sanctioned Intake	60
	Students Admitted	60
2011-12	Sanction Intake	60
	Student Admitted	60
2012-13	Sanction Intake	60

	Student Admitted	60
2013-14	Sanction Intake	60
	Student Admitted	60
2014-15	Sanction Intake	60
	Students Admitted	60
2015-16	Sanction Intake	60
	Students Admitted	54
2016-17	Sanction Intake	60
	Students Admitted	20

Cut off marks – General quota	: MAT Score
Year 2015-16	: Preet Jain (Score 562)
% Students passed with Distinction	: 11
% Students passed with First Class	: 29
Students opted for Higher Studies	: N.A.
Students Placed	: 8
Accreditation Status of course	: N.A
Doctoral Courses	: No
Foreign Collaborations, if any	: No
Professional Society Memberships	: NIL
Professional activities	: NIL
Consultancy activities	: NIL
Grants fetched	: N.A.
Departmental Achievements	: N.A
Distinguished Alumni	: N.A.
h. Name of Department	: MCA
Course	: MCA
Level	: PG
1 st Year of approval by the Council	: 2008
Year wise Sanctioned	: mentioned below
Year wise Actual Admissions	: mentioned below

P.G. Programmes		
Year		MCA
2008-09	Sanctioned Intake	60
	Students Admitted	Deferred
2009-10	Sanctioned Intake	60
	Students Admitted	03
2010-11	Sanctioned Intake	60
	Students Admitted	01
	Sanctioned Intake	60

2011-12	Students Admitted	02
2012-13	Sanctioned Intake	60
	Students Admitted	07
2013-14	Sanctioned Intake	60
	Students Admitted	00
2014-15	Sanction Intake	60
	Students Admitted	15
2015-16	Sanction Intake	60
	Students Admitted	0
2016-17	Sanction Intake	60
	Students Admitted	0

Cut off marks – General quota	: UKSEE
Year 2013-14	: Management Quota
% Students passed with Distinction	: 0
% Students passed with First Class	: 0
Students Placed	: N.A.
Average Pay package, Rs. /Year	: N.A.
Students opted for Higher Studies	: N.A.
Accreditation Status of course	: N.A.
Doctoral Courses	: No
Foreign Collaborations, if any	: NIL
Professional Society Memberships	: NIL
Professional activities	: NIL
Consultancy activities	: NIL
Grants fetched	: N.A.
Departmental Achievements	: N.A.
Distinguished Alumni	: N.A.

i. Name of Department : Computer Science & Engineering

Course	: M.Tech
Level	: PG
1 st Year of approval by the Council	: 2012
Year wise Sanctioned	: mentioned below
Year wise Actual Admissions	: mentioned below

P.G. Programmes	
Year	M.Tech
Sanctioned Intake	24

2012-13	Students Admitted	24
2013-14	Sanctioned Intake	24
	Students Admitted	24
2014-15	Sanction Intake	24
	Students Admitted	07
2015-16	Sanction Intake	24
	Students Admitted	5
	Sanction Intake	24
	Students Admitted	02

Cut off marks – General quota : Management Quota

Year 2015-16 : Kavita Mittal

% Students passed with Distinction : 08

% Students passed with First Class : 16

Students Placed : N.A.

Average Pay package, Rs. /Year : N.A.

Students opted for Higher Studies : N.A.

Accreditation Status of course : Not eligible yet

Doctoral Courses : No

Foreign Collaborations, if any : NIL

Professional Society Memberships : NIL

Professional activities : NIL

Consultancy activities : NIL

Grants fetched : N.A.

Departmental Achievements : N.A.

Distinguished Alumni : N.A.

j. Name of Department : Thermal Engineering

Course : M.Tech

Level : PG

1st Year of approval by the Council : 2012

Year wise Sanctioned : mentioned below

Year wise Actual Admissions : mentioned below

P.G. Programmes		
Year		M.Tech
2013-14	Sanctioned Intake	24
	Students Admitted	05
2014-15	Sanction Intake	24

	Students Admitted	07
2015-16	Sanction Intake	24
	Students Admitted	01
2016-17	Sanction Intake	18
	Students Admitted	2

Cut off marks – General quota : Management Quota

Year 2015-16 : Name- Mr. Rajesh Pandit

% Students passed with Distinction : 03

% Students passed with First Class : 04

Students Placed : N.A.

Average Pay package, Rs. /Year : N.A.

Students opted for Higher Studies : N.A.

Accreditation Status of course : Not eligible yet

Doctoral Courses : No

Foreign Collaborations, if any : NIL

Professional Society Memberships : NIL

Professional activities : NIL

Consultancy activities : NIL

Grants fetched : N.A.

Departmental Achievements : N.A.

Distinguished Alumni : N.A.

k. Name of Department : Civil Engineering

Course : M.Tech

Level : PG

1st Year of approval by the Council : 2012

Year wise Sanctioned : mentioned below

Year wise Actual Admissions : mentioned below

P.G. Programmes		
Year		M.Tech
2013-14	Sanctioned Intake	24
	Students Admitted	03
2014-15	Sanction Intake	24
	Students Admitted	07
2015-16	Sanction Intake	24
	Students Admitted	14

2016-17	Sanction Intake	24
	Students Admitted	06

Cut off marks – General quota	: Management Quota
Year 2015-16	: Name- Ms. Deepak Burman
% Students passed with Distinction	: 05
% Students passed with First Class	: 03
Students Placed	: N.A.
Average Pay package, Rs. /Year	: N.A.
Students opted for Higher Studies	: N.A.
Accreditation Status of course	: Not eligible yet
Doctoral Courses	: No
Foreign Collaborations, if any	: NIL
Professional Society Memberships	: NIL
Professional activities	: NIL
Consultancy activities	: NIL
Grants fetched	: N.A.
Departmental Achievements	: N.A.
Distinguished Alumni	: N.A.
14. Admission quota [#]	:
Entrance Test / Admission Criteria	: AIEEE for B.Tech, UKSEE for MCA and MAT/CAT for MBA, GATE for M.Tech
Cut off / last candidate admitted	: State Rank 4417 in CSE
Fees in rupees	: Tuition Fee 69,000/- per annum for B.Tech Tuition Fee 72,000/- per annum MCA, Tuition Fee 72,000/- per annum for MBA Tuition Fee 80480/- per annum for M.Tech
Number of Fee Waivers offered	:13
Admission Calendar	: As Per Uttarakhand Technical University, Dehradun
PIO quota	: N.A.
15. Infrastructural Information [^]	:
Classroom/ Tutorial Room facilities	: Classrooms 30/ Tutorial rooms 14

Library Facilities:-

Number of Library books /Titles/ Journals available (programme-wise)

Branch	No. of Title	No. of Volumes	CD's		Journals (Print)		Digital Library	
			NPTEL	Others	National	Inter-national	e- Journals	e-Book Titles
B.Tech:-								
EEE	474	4845	5		6	3	15	10
ECE	481	5250	1		12	4	55	12
ME	488	5699	6		12	5	27	17
CSE	445	5079	3		12	6	1	51
IT	465	4875	2		6	3	1	22
Civil	128	1286	0		12	6	0	10
Applied Science	552	5924	2	1374		3	150	21
MBA	565	3746	...	215	12	12	28	9
MCA	171	1057	...		12	12	1	23
M.Tech (CS)	26	164						
M.Tech (Thermal)	31	170						
M.Tech (Civil)	32	167						
	3858	38262	19	1589	84	54	278	175

Laboratory Details:-

S. No.	Department	Laboratory Name	Laboratory Details
1	Computer Science & Engineering	ACA Lab	Execute 3 posix threads, implement P ram algo, parallel matrix multiplication, Parallel & quick sort.
2	Computer Science & Engineering	AI Lab	LISP prog to Slove water Jug Problem & Steepest-Ascent Hill, Prolog programme to use BFS to apply EPP.
3	Computer Science & Engineering	CO Lab	Bread board implementation of Flip Flops, counters, Shift register, Adder/Subtractor (HALf & Full)
4	Computer Science & Engineering	Compiler Design Lab	FSA to recognize tokens, distinguish among integers, real nos, use of YACC tool to parse statement.
5	Computer Science & Engineering	Computer Lab	Implementation of DLL framing method, CRC algo, hamming code, LZW compression algo in C language.
6	Computer Science & Engineering	DA Lab	Divide and Conquer method (Quick merge sort), Greedy method, Dynamic Prog, Back tracking.
7	Computer Science & Engineering	DBMS Lab	SQL quries using SQL & Logical operator. Data from Table, Create views, cursors & Triggers.
8	Computer Science & Engineering	DIP Lab	Implement LOW & HIGH Pass Filters, Arithmetic & Geometric Mean Filter, Smoothing & Sharpening of 8 bit image
9	Computer Science & Engineering	Data Structure Using C Lab	Stack, Queue, List, Implementation using Array & Pointer. Searching and sorting Algo. Non Linear data st.
10	Computer Science & Engineering	Distributed System Lab	Simulation of Lamport's Logical Clock in C, implement distributed chat server using TCP sockets in C.
11	Computer Science & Engineering	Java Programming Lab	Implementation of Classes inheritance, Polymorphism, Java Servlet, Applet interface.
12	Computer Science & Engineering	Numerical Technique Lab	Polynomial Equation, Newton's & Gauss Forward & Backward formula, Sterling's interpolation formula.
13	Computer Science & Engineering	Operating System Lab	Simulation of CPU Scheduling algo, mutex & Semaphores, page replacement algo.
14	Electrical & Communication Engg.	Communication & AIC Lab	Equipments for PAM, PWM, PPM, TDM, PCM, PLL & Modulation and Demodulation.
15	Electrical & Communication Engg.	DSP Lab	DSP Kits for Programming & Waveform construction using TI320XXX Processor.
16	Electrical & Communication Engg.	Digital Electronics Lab	Equipments for Experiments on verification of functionality & Truth tables of Digital I.C.s
17	Electrical & Communication Engg.	Electronics Lab 1	Equipments for experiments on Characteristics of rectifier Diode, Zener & BJT.
18	Electrical & Communication Engg.	Electronics Lab 2	Equipments for experiments on op-amp, characteristics & applications
19	Electrical & Communication Engg.	Microprocessor Lab	Equipments for experiments on programming & interfacing PPI, PIC, PIT, ADC & DAC etc.
20	Electrical & Communication Engg.	Microwave Lab	Equipments for experiments on wave-guides, directional couplers & Antennas.
21	Electrical & Communication Engg.	Optical Fiber Lab	Equipments for Fiber Optical Analog & Digital Link Verification & Optical Power measurements.
22	Electrical & Communication Engg.	PCB Lab	Equipments for PCB designing, Drawing, Artwork, Etching, Drilling etc
23	Electrical & Communication Engg.	Telemetry Lab	Equipments for Transmission & Reception of Signals from various Transducers.

24	Electrical / Electrical & Elex	Basic Electrical Lab	Equipments for verification of Network Theorems, Energy Measurements, Transformer & DC shunt Machine
25	Electrical / Electrical & Elex	Control System Lab	Linear System Simulator, PID controller, Magnetic Amplifier, Position controller & Synchros.
26	Electrical / Electrical & Elex	EMAC Lab - 2	Load test on 3-ph Slip Ring IM, AC Gen, Synchronous Motor, Magnetic test on M-G set.
27	Electrical / Electrical & Elex	EMEC Lab- 1	Shunt generators, Single Phase Induction motor, Parallel Operation of Alternators.
28	Electrical / Electrical & Elex	Electric Measurement & Instrumentation Lab	Kits for Strain, Temperature & Pressure measurement, Kelvin, Maxwell, Anderson and Schering Bridge.
29	Electrical / Electrical & Elex	Electrical Simulation Lab	Simulation of Electromagnetic Transients using TINA Software.
30	Electrical / Electrical & Elex	MAT Lab	Simulation of control System , Signal Processing, Communication & Simulink Modules using MATLAB
31	Electrical / Electrical & Elex	Network Lab	Kits for Transient response of RLC circuits, Theorems for AC, DC circuits, Low, High, Band Pass Filters.
32	Electrical / Electrical & Elex	Power Electronics Lab	Equipment for triggering of SCR, IGBT, BJT, MOSFET etc. Chopper, Inverter & Convertor Circuits.
33	Electrical / Electrical & Elex	Power System Lab	IDMT, Differential Relays, L-G, L-L, L-L-G, L-L-L Faults. Negative & Zero Sequence reactance.
34	First year subjects	Chemistry Lab	Equipments for Colorimetry, Spectrometry, pH measurements etc for Qualitative & Quantitative analysis.
35	First year subjects	Language Lab	Equipments for Learning Phonetics, Accent and Pronunciations.
36	First year subjects	Physics Lab	Equipments for experiments on optics, Viscosity, Electromagnetism & Hall Effect etc
37	Information Technology	Computer Programming Lab	DOS, Unix, Word Processing, C Language, Storage Class, Array, Structure, Union, Pointer, Function.
38	Information Technology	E- Commerce Lab	Basics of HTML, DHTML, ASP & Data Connectivity, insertion/modification of Data with ASP.
39	Information Technology	Mini Project Lab	Developing a small e commerce product catalog using ASP/MS SQL
40	Information Technology	Software Development Lab	Innovating payroll, Banking System, Railway reservation, college Admin, State management System.
41	Information Technology	Software Engineering Lab	Design & Development of Test cases for testing, c/b analysis
42	Information Technology	Web Technology Lab	Installation of TOMCAT Web Serve & Java, Implementation of "Hello" prog using JSP Strusts.
43	MCA	Information system Lab	Project for Managing education Inst using JAVA, Implementation of Library Mgmt system using JAVA.
44	MCA	Object Oriented System	Write pro for Java Applets, use Java Selvlet for Proxy server, writ prog that involve "if" statement.
45	Mechanical Engineering	Applied Thermodynamics Lab	Fire tube, Water tube, Babcock, Wilcox, Lancashire Boiler. Steam Pressure & Reaction Turbines, Morse test.
46	Mechanical Engineering	Automobile Lab	Fuel Supply of P/D engines, Steering, Susp, Lubricating Ignition Sys, MPFI, Gear Box, Differential Assembly.
47	Mechanical Engineering	CAD/CAM Lab	Practice on CNC Milling & Lathe M/Cs, Mini Robot & related softwares.

48	Mechanical Engineering	Dynamics of Machine Lab	Governor, Motorized Gyroscope CAM Analysis Apparatus. Static & Dynamic Balance, Pantograph, Dynamometer
49	Mechanical Engineering	Fluid Machinery Lab	Pelton, Francis, Kaplan turbines reciprocating & centrifugal pump test rigs, Hydraulic Ram & Press Models.
50	Mechanical Engineering	Fluid Mechanics Lab	Surface Tension, Metacentric Height, Reynolds, Bernoulli's/Orifice, Pilot static tube, venturi apparatus
51	Mechanical Engineering	Heat & Mass Transfer Lab	Composite Wall, 2 Phase Heat transfer, Natural & Forced Convection, Stefan Boltzman Apparatus. Emissivity
52	Mechanical Engineering	Machine Drawing Lab	Top, Side & Elevation of Machine components, their Sectional Isometric & Perspective views.
53	Mechanical Engineering	Manufacturing Science Lab	Power Press, Injection Moulding, Sieve Shaker, Moulding Box, Crucible Furnace and Foundry tools.
54	Mechanical Engineering	Material Testing Lab	UTM, Creep, Torsion & Hardness Testing. Heat Treatment & Beralite moulding.
55	Mechanical Engineering	Measurement & Metrology Lab	Signbar, Slip, Limit, Feeler and Plug Gauges. Surface Plate, Techometry & Stroboscopy.
56	Mechanical Engineering	Mechanical Engineering Lab	Models for 2&4 stroke IC & Steam Engine, Vapour Compression refrigerator, Window AC, Tensile, Impact test
57	Mechanical Engineering	Refrigeration & Airconditioning Lab	Refrigerator & Window AC test rigs, Shell & Coil type, Plate, Forced convection, Evaporators & Controls
58	Mechanical Engineering	Workshop	Operation of Lathe, Shaper, Power Saw, Surface grinding & Milling M/c. Fitting, Carpentry, Smithy, welding.
59	Civil Engineering	Surveying lab	Total Station, Electronic Theodolite, Vernier Theodolite, Dumpy Level, Tilting Level, Auto Level, Plan Table, Planimeter, GPS & GIS System, Levelling Staff, Ranging Rods. Measuring tapes, Chains, Pegs, Surveying Compass.
60	Civil Engineering	Fluid Mechanics	Surface Tension, Metacentric Height, Reynolds, Bernoulli's/Orifice, Pilot static tube, venturi apparatus,
61	Civil Engineering	Hydraulics lab	Tilting Flume, Pelton, Francis, Kaplan turbines reciprocating & centrifugal pump
62	Civil Engineering	Concrete lab	Slump test apparatus, vee-bee apparatus, hydro meter, Los Angeles machine for abrasion test on aggregate,
63	Civil Engineering	Geology lab	Geological maps of tunnels, hill roads, highways, dams. 3 D model of Earth, 3 D Raised charts of Volcanic systems and rock & minerals of earth, Models of strike & dip, samples of mineral and rocks
64	Civil Engineering	Building material lab	Compressive testing machine, impact machine, vibrating machine, hot air oven, water bath, silt jar, le-chatlier apparatus, cube mould, sieve shaker, weighing machine, sieve, crushing apparatus,
65	Civil Engineering	Transportation lab	Los Angeles Apparatus, Marshal Testing Machine, Flash point fire point apparatus, Weighing Machine, Impact Testing Machine.
66	Civil Engineering	Environment engineering lab	Sound Level Meter, Turbidity Meter, Conductivity Meter, Total Dissolved Solids Meter, Dissolved solid meters, PH Meter.
67	Civil Engineering	Structural analysis lab	Two Hinged apparatus, Three Hinged apparatus, Beam model, Column Apparatus, Portal Frame apparatus, Loads, Redundant Joint apparatus.
68	Civil Engineering	Soil Mechanics lab	Casagrande Apparatus, Pycnometer Bottle, Vane shear Apparatus, Shrinkage Limit Apparatus, Moulds.

Auditorium / Seminar Halls/ Amphi	: Seven Seminar Halls in the Institute. An auditorium is ready.
Cafeteria	: A modern cafeteria serving snacks and beverages
Indoor Sports facilities	: For Carrom, Chess, Table Tennis exist.
Outdoor Sports facilities	: Facilities for Cricket, Football, Volleyball, Basketball, and Badminton exist along with an upcoming stadium.
Gymnasium facilities	: State of art Gym exists.
Facilities for disabled	: Barrier free environment.
Any other facilities	: ATM ,Shopping centre, Laundry and Guest Houses, beautifully landscaped lawns & garden with flower beds.
16. Boys Hostel	: In campus modern hostel for over 466 boys exist.
Girls Hostel	: In campus modern hostel for over 83 girls exist too.
Medical & other Facilities at Hostel	: Round the clock medical help panel of doctors and ambulance is available
17. Academic Sessions	: The academic sessions follow the calendar of UTU.
Examination system, Year/ Sem.	: Semester system, as per calendar of UTU
Period of declaration of results	: Every Semester
18. Counseling / Mentoring	: Psychotherapist, counseling expert is available.
Career Counseling	: For career counseling a dedicated Corporate Relation Department undertakes tests for aptitude and accordingly mentors the students.
Medical facilities	: Doctors are available.
Student Insurance	: Yes, a compulsory cover is there.
19. Students Activity Body	: 8 Club functional.
Cultural activities	: Cultural events are organized regularly to synchronize with major festivals.
Guest Lectures	: To extend learning beyond the classroom teaching, we invite experts from the industry to conduct guest lectures, seminars and workshops on various topics and issues related to finance
Sports activities	: Annual sports are organized in the campus.
Literary activities	: GD of students gives ample opportunities to develop the literacy talent of students.
Magazine/ Newsletter	: Tech Innova a student magazine is brought out every year.
Technical activities / TechFest	: Microsoft Azure Training, Windows Phone Application Training, ASP.Net by Microsoft Trainer, Microsoft App Fest, Tech Fest is being organized and our students also participate in Tech Fest organized by other Institutes.
Industrial Visits / Tours	: Industrial visits are a regular feature of our academic program and the students are required to give presentations on what they learnt in these tours such as SARA Industries, HQ

Lamps.

Alumni activities

: The alumni association of Tula's Institute has a hand holding approach towards the aspiring graduates and is a key driving force in the Institutes' placement process.

NCC

: A Girls Senior Wing (11 UK Girls Battalion) of NCC is operational in Tula's. Various camps for Adventures and personality development are held each year. Other camps such as Republic day camp, National Integration camp, The Sena camp etc are organized time to time. Students of the college are encouraged to actively participate in N.C.C and contribute their best to the society and nation. The National Cadet Corps conducts activities such as Training Camps, Rifle Shooting Practice / Competitions, First-Aid Training, Rope-climbing etc. In the past years, a good number of students have won accolades in these activities.

In-house Aptitude Training Programme : An in-house training is being provided round the year to students from the first year onwards to enhance their aptitude skills, communication skills etc. which is industry specific.

20. Name of the Information Officer for RTI: N.A.

RTI

Designation :

Phone number with STD code :

FAX number with STD code :

Email